

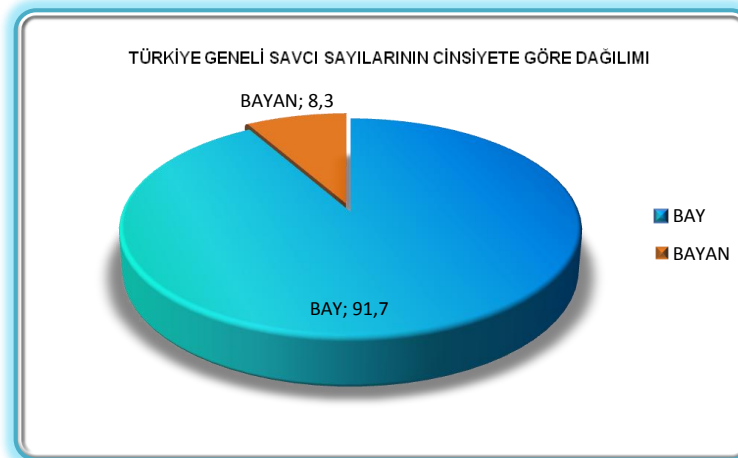
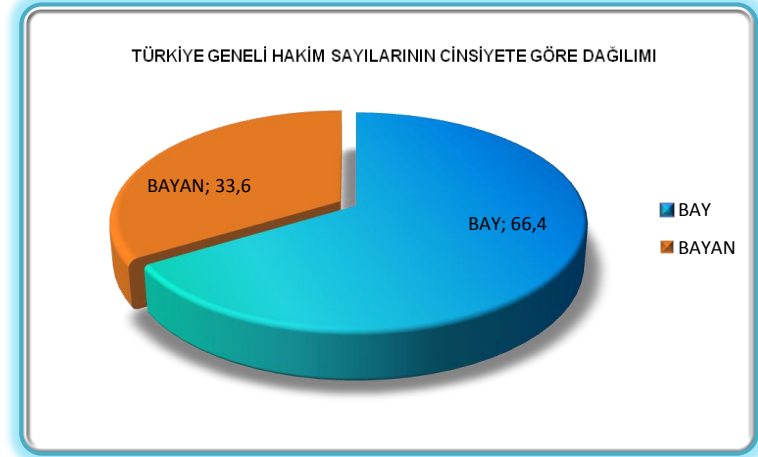
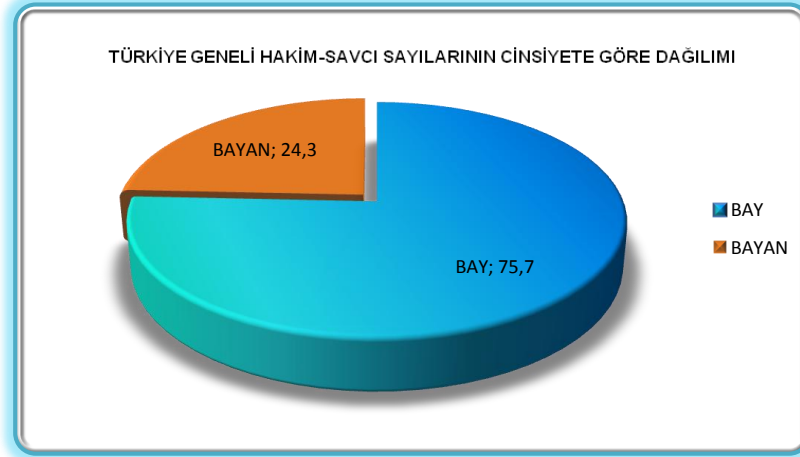
TÜRKİYE GENELİ HAKİM VE CUMHURİYET SAVCISI KADRO DURUMU

	BAY	%	BAYAN	%
HAKİM	5046	66,4	2558	33,6
SAVCI	4073	91,7	370	8,3
TOPLAM	9119	75,7	2928	24,3

1- Türkiye geneli toplam 12047 hakim ve savcı bulunmaktadır. Bunun 7604'u (% 63,1) hakim, 4443'ü (% 36,9) savcıdır; 9119'u (% 75,7) bay, 2928'i (%24,3) bayandır.

2- Türkiye geneli toplam 7604 hakim bulunmaktadır. Bunun 5046'sı (% 66,4) bay, 2558'i (% 33,6) bayandır

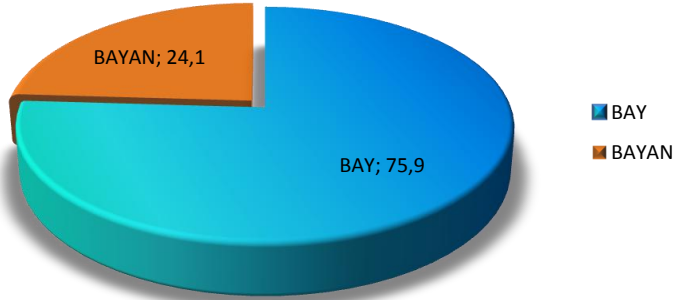
3- Türkiye geneli toplam 4443 savcı bulunmaktadır. Bunun 4073'ü (% 91,7) bay, 370'i (% 8,3) bayandır.



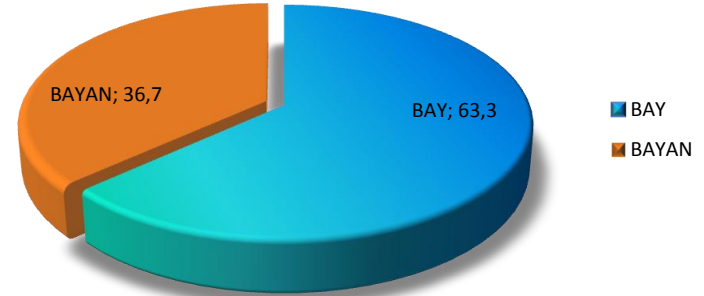
**ADLİ YARGI
HAKİM VE CUMHURİYET SAVCISI KADRO DURUMU**

	BAY	%	BAYAN	%
HAKİM	3473	63,3	2014	36,7
SAVCI	3873	92,5	314	7,5
TOPLAM	7346	75,9	2328	24,1

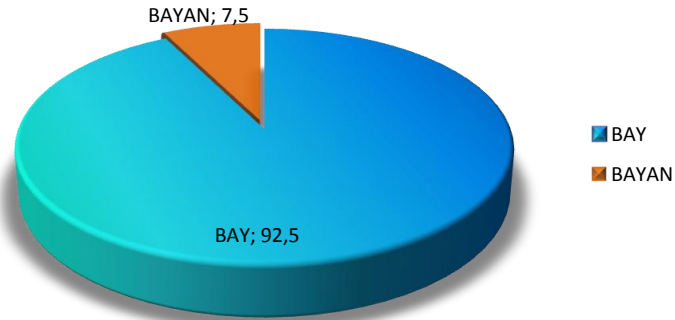
ADLİ YARGI HAKİM-SAVCI SAYILARININ CİNSİYETE GÖRE DAĞILIMI



ADLİ YARGI HAKİM SAYILARININ CİNSİYETE GÖRE DAĞILIMI



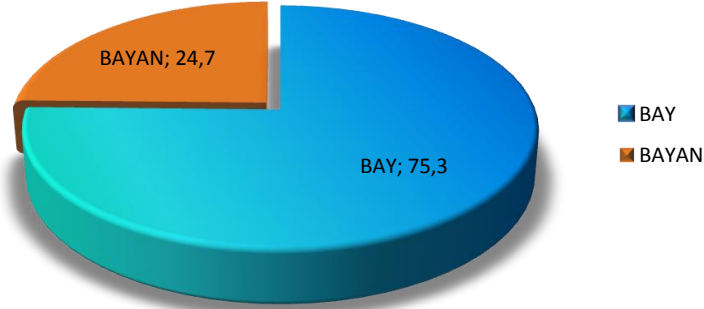
ADLİ YARGI SAVCI SAYILARININ CİNSİYETE GÖRE DAĞILIMI



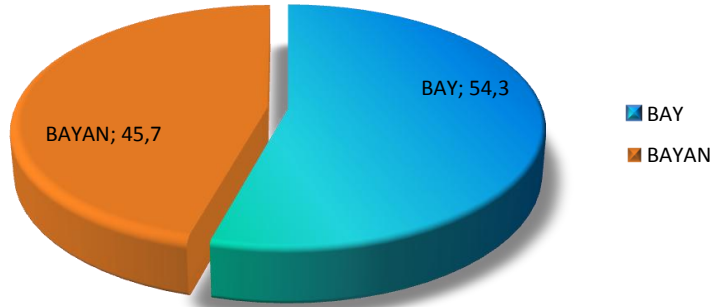
DANIŐTAY
ÜYE, HAKİM VE SAVCI KADRO DURUMU

	BAY	%	BAYAN	%
ÜYE	116	75,3	38	24,7
TETKİK HAKİMİ	158	60,5	103	39,5
SAVCI	38	54,3	32	45,7
TOPLAM	312	64,3	173	35,7

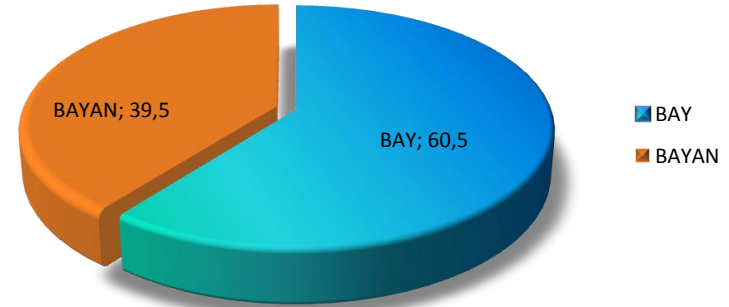
DANIŐTAY ÜYE SAYILARININ CİNSİYETE GÖRE DAĞILIMI



DANIŐTAY SAVCISI SAYISININ CİNSİYETE GÖRE DAĞILIMI



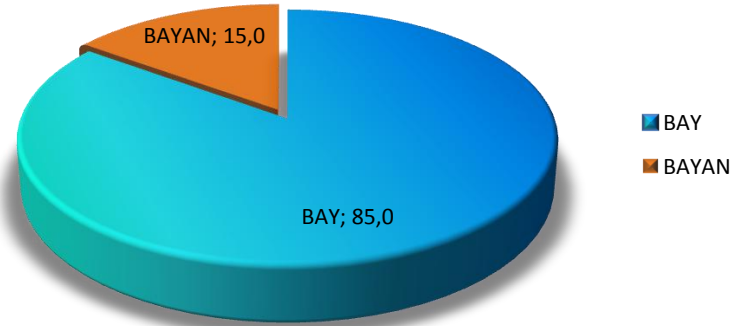
DANIŐTAY TETKİK HAKİMİ SAYISININ CİNSİYETE GÖRE DAĞILIMI



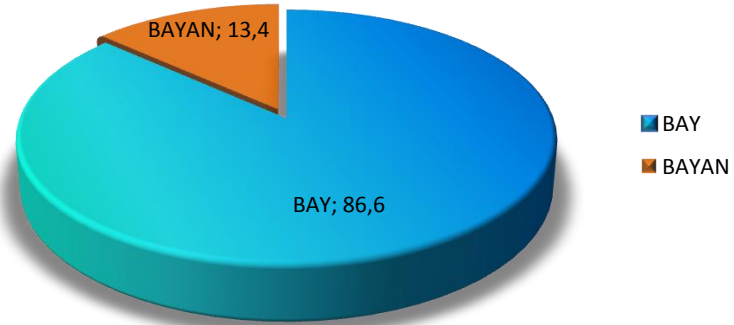
**YARGITAY
ÜYE, HAKİM VE CUMHURİYET SAVCISI KADRO DURUMU**

	BAY	%	BAYAN	%
ÜYE	317	85,0	56	15,0
TETKİK HAKİMİ	406	65,1	218	34,9
SAVCI	162	86,6	25	13,4
TOPLAM	885	74,7	299	25,3

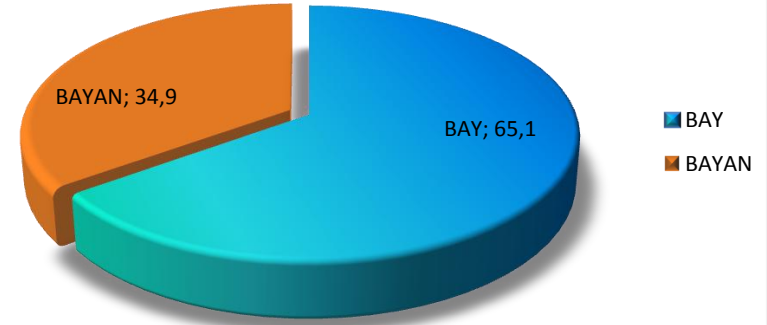
YARGITAY ÜYE SAYILARININ CİNSİYETE GÖRE DAĞILIMI



YARGITAY CUMHURİYET SAVCISI SAYISININ CİNSİYETE GÖRE DAĞILIMI

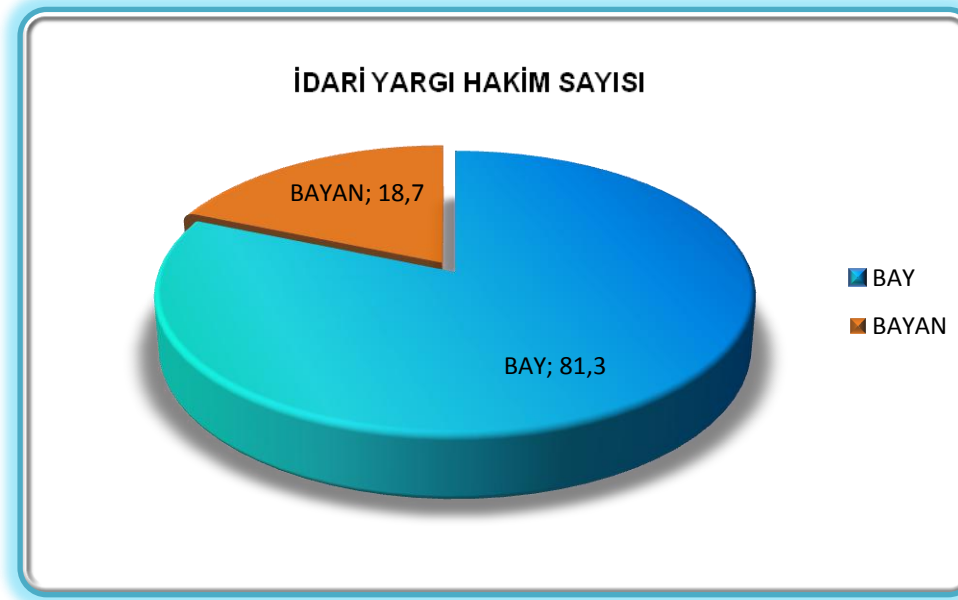


YARGITAY TETKİK HAKİMİ SAYISININ CİNSİYETE GÖRE DAĞILIMI



İDARİ YARGI HAKİMİ

	BAY	%	BAYAN	%
HAKİM	728	81,3	167	18,7



**ANAYASA MAHKEMESİ
RAPORTÖRÜ (HAKİM SINIFINDAN) KADRO
DURUMU**

	BAY	%	BAYAN	%
HAKİM	18	78,3	5	21,7

ANAYASA MAHKEMESİ RAPORTÖRÜ (HAKİM SINIFINDAN) CİNSİYETE GÖRE DAĞILIMI

